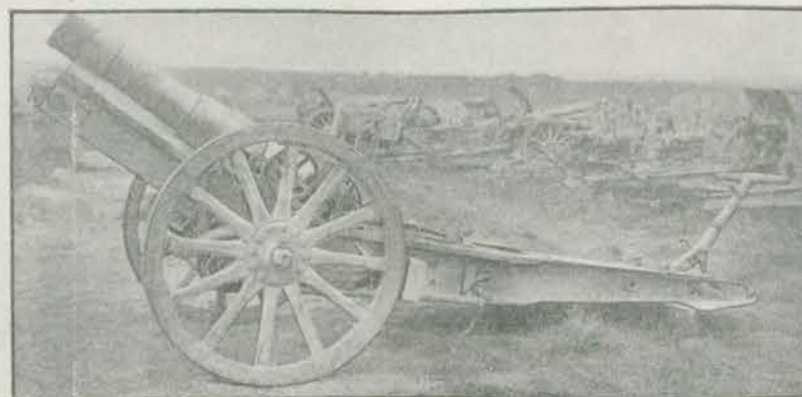
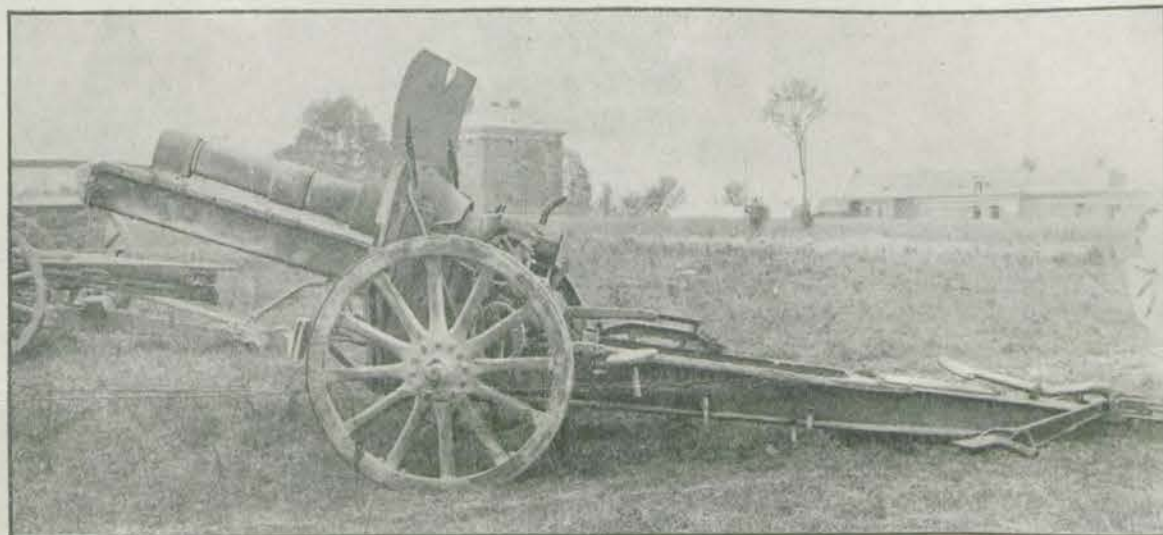


SERIAL No. 3.

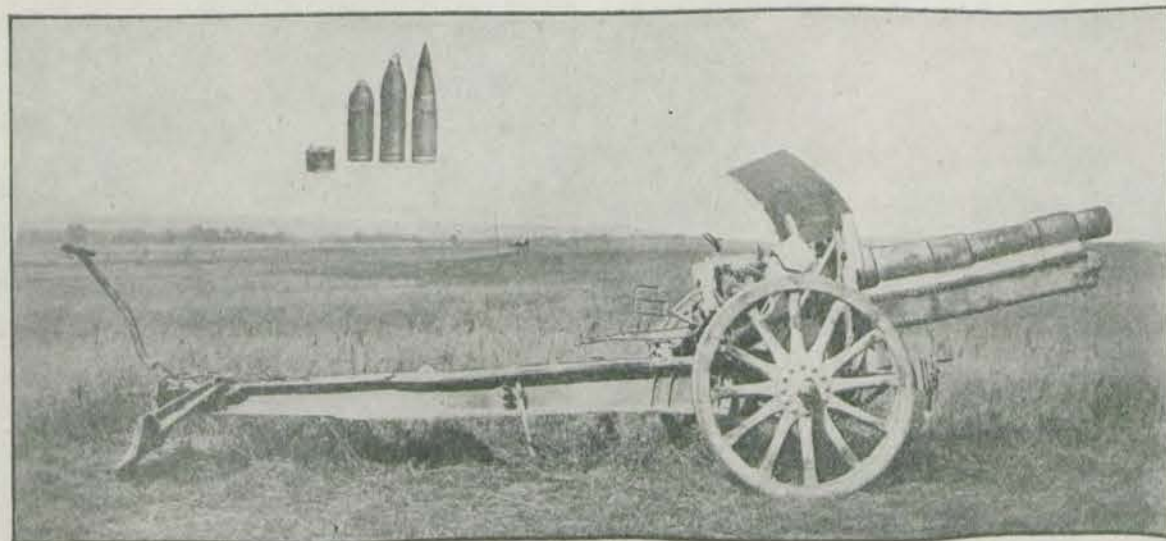
Medium and Heavy Field Howitzers.



1902 15-cm. Howitzer (s. F.H. 09).



1913 15-cm. Howitzer (s. F.H. 13).



Long 1913 15-cm. Howitzer (ig. s. F.H. 13).

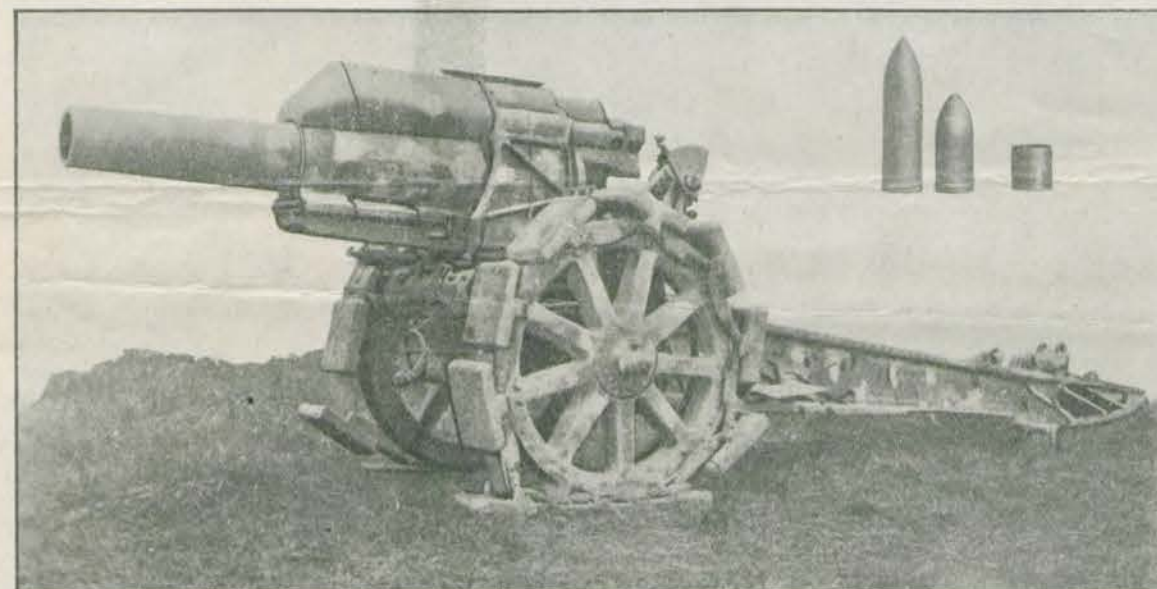
General Staff (Intelligence),
General Headquarters.

15th September, 1918.

COMPARISON OF 15-CM. HOWITZERS.

	1902 howitzer.	1913 howitzer.	Long 1913 howitzer.
Calibre	14.97 cm. (5.89 in.)	14.97 cm. (5.89 in.)	14.97 cm. (5.89 in.)
Overall length of piece	12 calibres = 5 ft. 9½ in.	14 calibres = 6 ft. 10½ in.	17 calibres = 8 ft. 4½ in.
Recuperator	Spring recuperator.	Either spring or air recuperator.	Air recuperator.
Maximum elevation on carriage	42°	45°	45°
Amount of traverse	8° 56'	about 4°	about 4°
Weight of piece	15½ cwt.	15½ cwt.	16¼ cwt.
Weight of howitzer in action	39¼ cwt.	—	43 cwt.
Transport	All three types were designed for horse-drawn transport, but, owing to the shortage of horses, may be sometimes hauled by lorries.		
Number of charges	1-6	1-7	1-8
Weight of shell	92 lbs.	92 lbs.	92 lbs.
Maximum ranges:—			
With 2 c.r.h. shell	8,147 yds. (Charge No. 6)	9,296 yds. (Charge No. 7)	9,296 yds. (Charge No. 8)
With 7 c.r.h. shell with false cap	—	—	9,624 yds.

NOTE.—All three howitzers fire the same ammunition, except as regards the super-charges and the 7 c.r.h. shell with false cap (15 cm. Gr. 14 Haube). The latter is only fired from the long 1913 howitzer and is not fired with Charges 1-7.



New 21-cm. Howitzer or "Long Mortar" (lg. Mrs.).

COMPARISON OF 21-CM. HOWITZERS OR "MORTARS."

The new long 21-cm. howitzer or "Long Mortar" (lg. Mrs.) differs from the former pattern or "Mortar" (Mrs.) by the length of the piece and a corresponding increase in range of 875 yards. Both howitzers fire the same ammunition. Streamline shell and shell with false caps are not in use.

	"Mortar."	"Long Mortar."
Calibre	21.1 cm. (8.3 in.)	21.1 cm. (8.3 in.)
Overall length of piece	12 calibres = 8 ft. 4 in.	15 calibres = 10 ft. 3 in.
Recuperator	Air recuperator, constant recoil.	Air recuperator, constant recoil.
Maximum elevation on carriage	+ 70°	+ 70°
Amount of traverse	4°	4°
Weight of piece	51¼ cwt.	52½ cwt.
Weight of howitzer in action	7 tons 5 cwt.	About 8 tons
Weight of piece on travelling carriage	4 tons 2 cwt.	—
Weight of carriage limbered up	4 tons 8 cwt.	—
Transport	Both howitzers are designed for horse-drawn transport, the piece being carried on a special wagon.	
Number of charges	8	8
Weight of shell	The long shell weighs 265 lbs. and the short shell 185 lbs.	
Maximum ranges:—		
2 c.r.h. long shell ('96 n/A.)	10,280 yds.	11,155 yds.
1.5 c.r.h. short shell (1914)	9,952 yds.	10,280 yds.